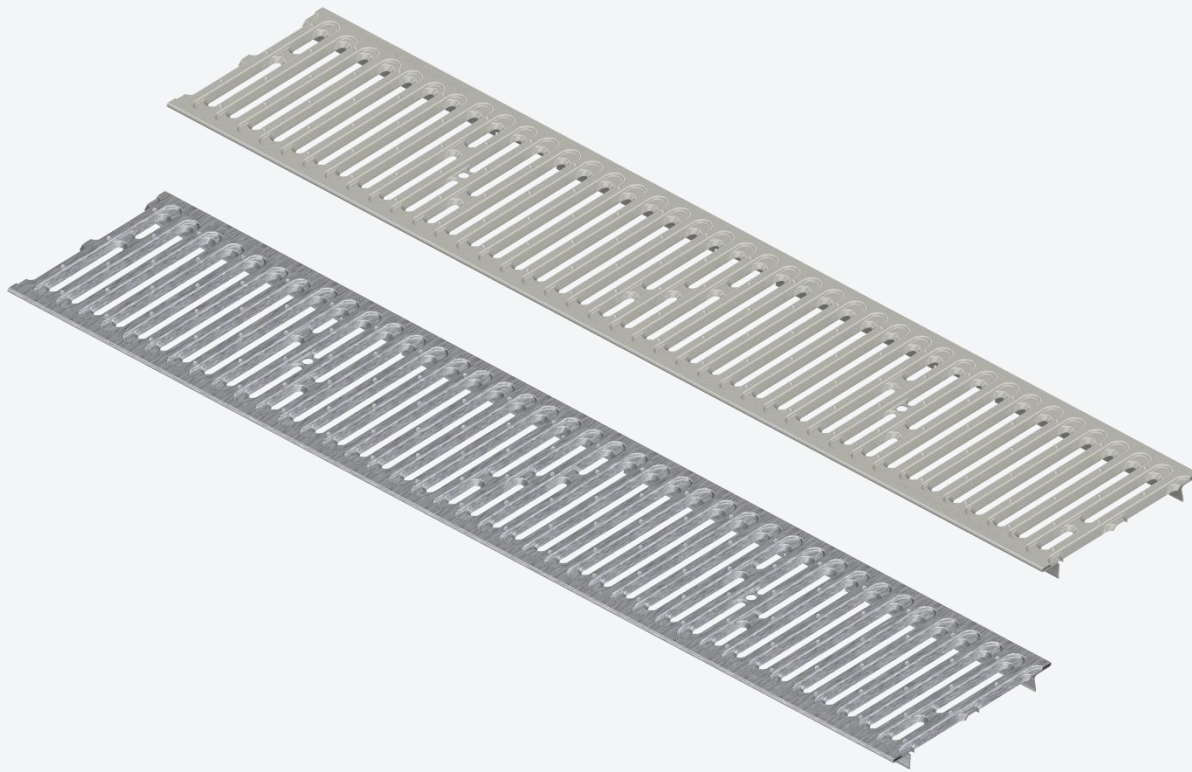




Steel grate Base 6" (DN150) slotted A15



Technical characteristics



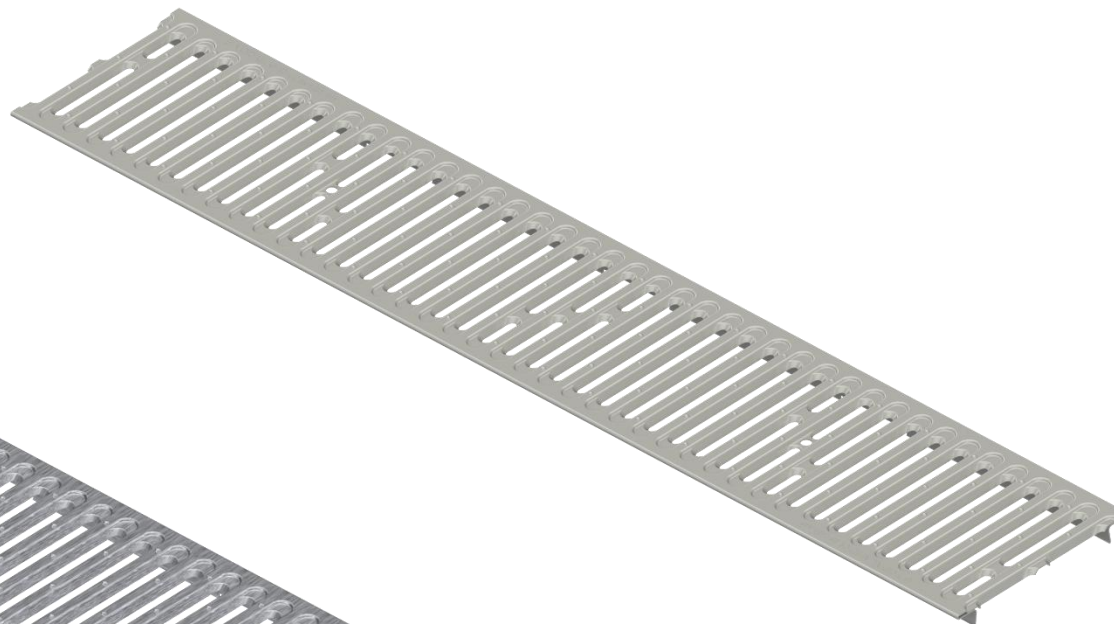
Technical characteristics

Name
6" Galvanized slotted grate Base for fastener A15; 6" Stainless slotted grate Base for fastener A15; 6" Stainless slotted grate Base for fastener A15 matte
Width, inch [mm]
7-3/8 [186]
Height, inch [mm]
3/4 [21]
Length, inch [mm]
39-1/4 [998]
Area of water intake slots
76.53 sq inch/ 493.76 sq sm
Load class
A15
Weight, lb [kg]
4.93 [2.24]
Article
22101; 22901; 22901.2

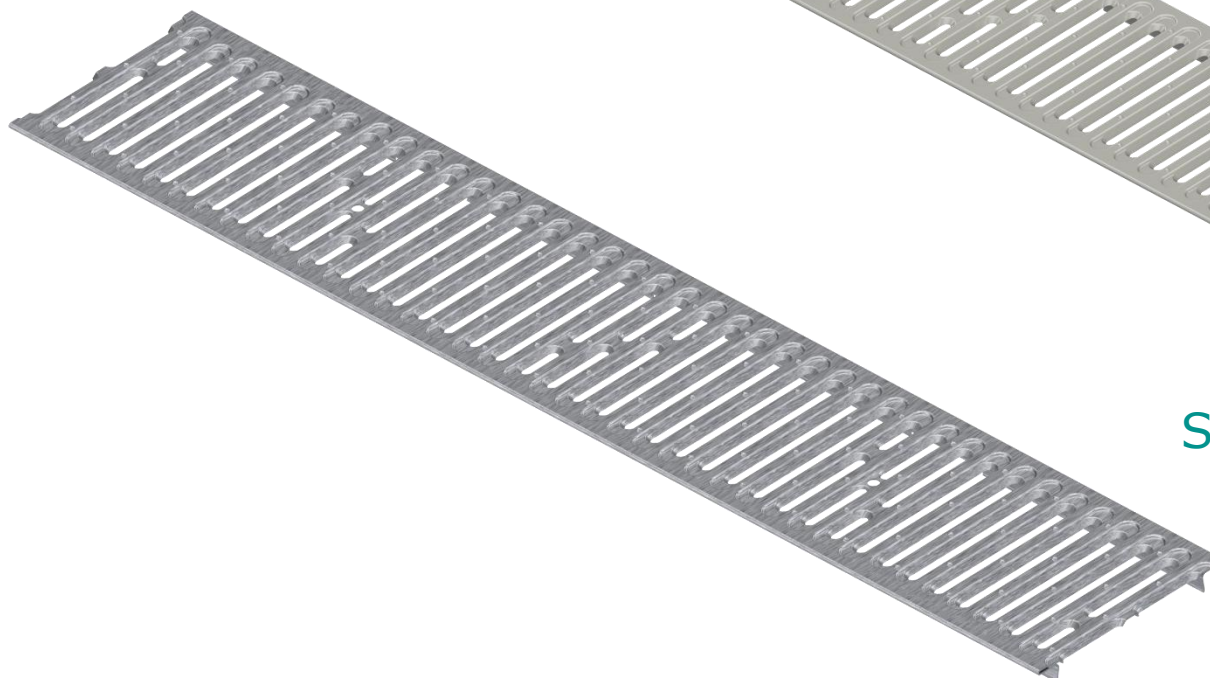
Variants of execution

22901-22901.2

22101

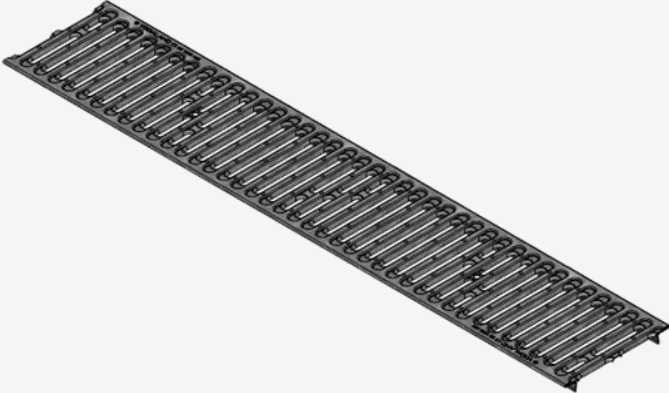
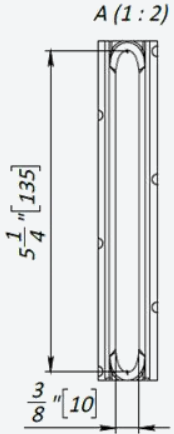
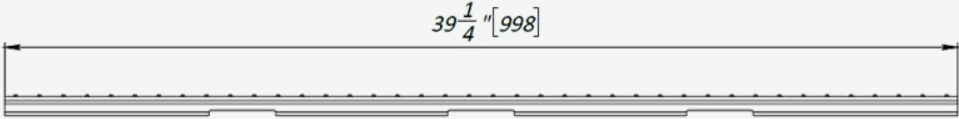
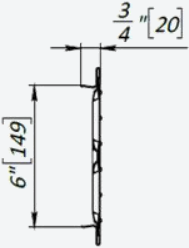
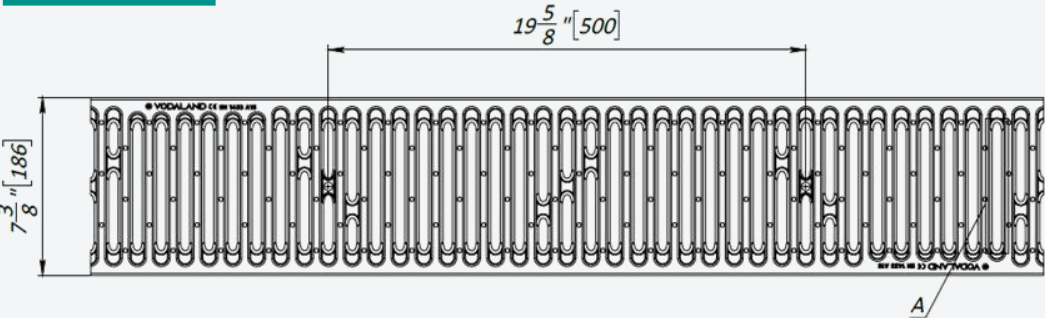


Stainless steel/
Stainless steel matte



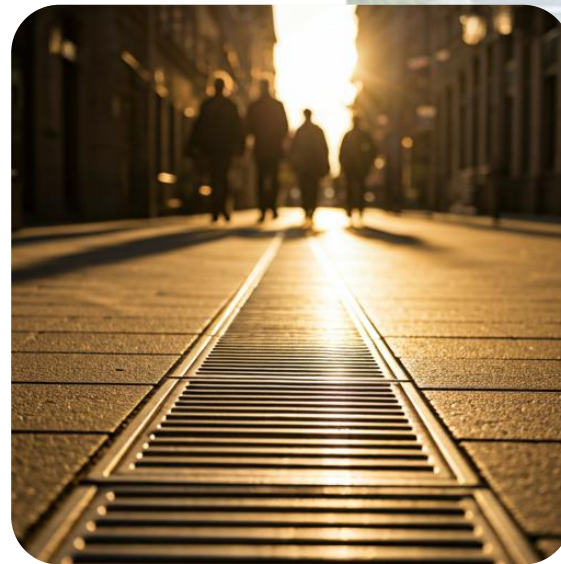
Galvanized steel

Drawings

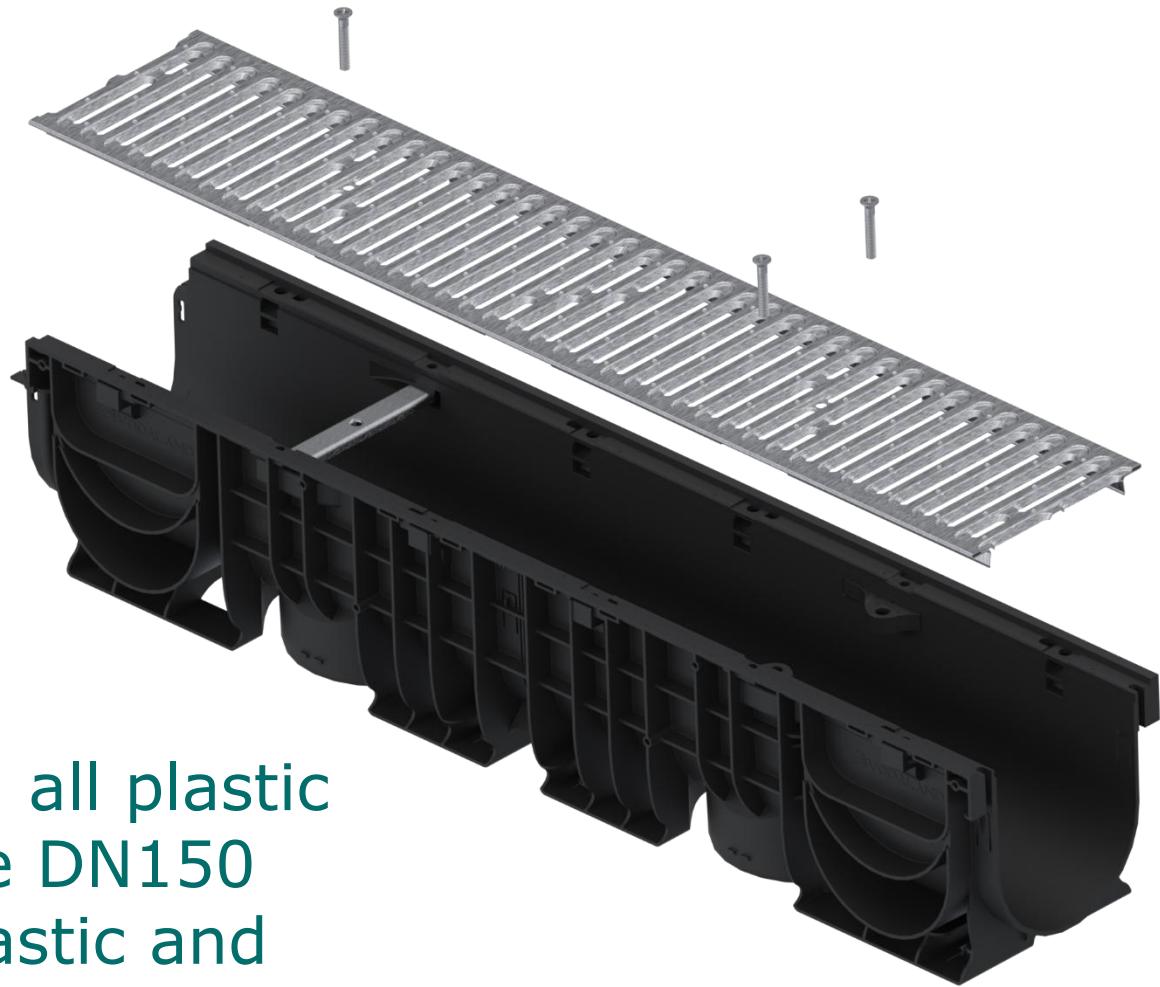


Areas of use

- ❖ Pedestrian (sidewalks, pedestrian paths, alleys, boulevards, squares)
- ❖ Recreational areas (parks, recreation areas, sports grounds, children's playgrounds)
- ❖ Private areas (personal plots, terraces, patios, pool areas, entrances to buildings)
- ❖ Decorative and green areas (lawns, flower beds, landscape elements)



Assembly



It can be used with all plastic channels of the Base DN150 series with both plastic and steel center fixings and with center fixing inserts.



Thanks!

